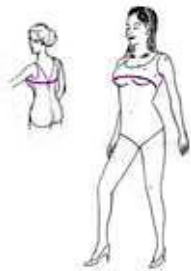




**Measuring Instructions:**

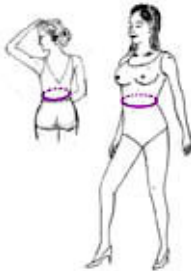
Sizes	6	8	10	12	14	16	18	20	22	24
<b>BUST</b>	34	35	36	37	38.5	40	41.5	43	45	47
<b>WAIST</b>	25	26	27	28	29.5	31	32.5	34	36	38
<b>HIP</b>	37	38	39	40	41.5	43	44.5	46	48	50



*Full Bust*

INCHES.....

Around bust at fullest point.



*Waist*

INCHES.....

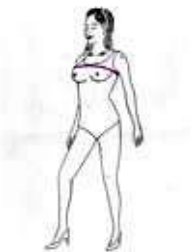
Around waist at smallest point. Let's start by tying a ribbon or piece of string around the natural waist, which would be around your torso at the smallest point. Leave the string in place while you do the rest of the measurements. You will need it for reference for some of the other measurements.



*Hips*

INCHES.....

Around hips at fullest point, taking note of how far down from the waist you are measuring.



*Upper bust:*

INCHES.....

Measure above your breasts in the same manner as you measured across them.

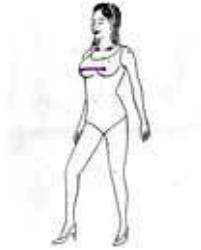


*Under bust:*

INCHES.....

Measure under your breasts in the same manner as you measured over them.

---

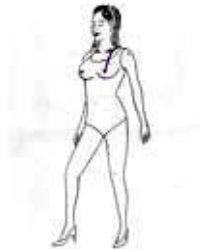


*Nipple to nipple:*

INCHES.....

Bust point to bust point. Okay, technically, nipple to nipple.

---

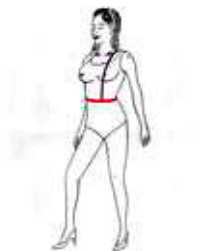


*Length of Should to bust:*

INCHES.....

From the top of your shoulder down to bust point (nipple).

---

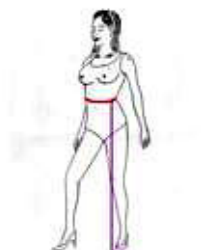


*Front Length Shoulder to Waist*

INCHES.....

Remember that point on your shoulder. We'll use that again and measure from there OVER your bust straight down to the ribbon on your waist.

---



*Outer Leg*

INCHES.....

From waist to floor WITH your shoes on.

---

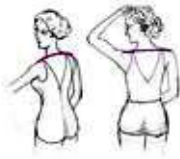


*Arms eye*

INCHES.....

This measurement gives me the size of the sleeve hole that you are comfortable wearing. This measurement is entirely subjective and you can make it as deep or as tight as you are comfortable with.

*Shoulder to Shoulder*



INCHES.....

Now from the edge of that shoulder socket, measure all the way over to the same point on the other shoulder along the back.

---

*Neck*



INCHES.....

Around neck loosely. You will not need this one unless your garment has a high neck and/or collar.

---

*Arm Length*



INCHES.....

Shoulder point to wrist arm bent.

---

*Bicep*



INCHES.....

Around arm at fullest part of upper arm.

---

*Upper arm length*



INCHES.....

Measure from outer shoulder down to elbow.

---

*Length of armpit to elbow:*



INCHES.....

Measure from armpit to elbow.



*Waist to hem:*

INCHES.....

Measure from waist to hem.

---



*Hollow to hem:*

INCHES.....

Measure from hollow to hem.

---

If you have any problems please contact  
To Cherish we will be happy to help you.

**P: 06 870 7266 [Andrea@tocherish.co.nz](mailto:Andrea@tocherish.co.nz)**